



BarnTALK

Summer 2008

Volume 3 Issue 1

SUCCESS BEGETS SUCCESS



Daryl Real,
Vice President-Livestock

The 2008 Fair season seems to be right around the corner. Amid high feed and fuel prices, livestock shows and youth exhibitions continue to be successful because of the role and importance they play in the agriculture and livestock industry. That importance carries through the workings of the State Fair of Texas Livestock Department, where everyone strives to continually elevate the show.

Of highest importance, the Youth Livestock Auction Committee has been busy brainstorming to grow the Youth Livestock Auction of Champions. Our recent success in bringing more dollars

to Texas Youth has fueled the ambition and enthusiasm among our volunteers to keep moving forward. For the past 4 years, the auction committee has worked hard to increase the average dollars awarded to exhibitors, and 2008 will be no exception. The committee has set new goals with the success of our exhibitors as top priority.

Another example of growth is seen in the scholarship program for 2008 – 2009: all recipients will receive a 25% increase in funding! The Scholarship Committee realized the importance of keeping pace with the ever-increasing cost of a college education, and voted unanimously to take the plunge. Past scholarships were awarded as \$4,000 education grants for a four-year program, but now applicants will vie for \$5,000. What's better yet, anyone who is currently on an SFT Scholarship will receive these same benefits as we

move forward on a prorata basis.

Speaking to the Pan American Livestock Exposition, success has come in the form of open borders. Historically, Mexico has been a great market for top-notch genetics, but due to closed borders, those genetics have not been available. With the recent work of Todd Staples, Texas Commissioner of Agriculture, this market will be a real opportunity for progressive breeders to bring their show-strings to the State Fair of Texas in 2008.

Success begets success is a phrase coined a long time ago. Successes accomplished these past years are just the beginning to a bright new future. The committees and staff are working hard to elevate our show for your success, and we look forward to Dallas as a stop on everyone's show-circuit.

IMPORTANT DATES TO REMEMBER

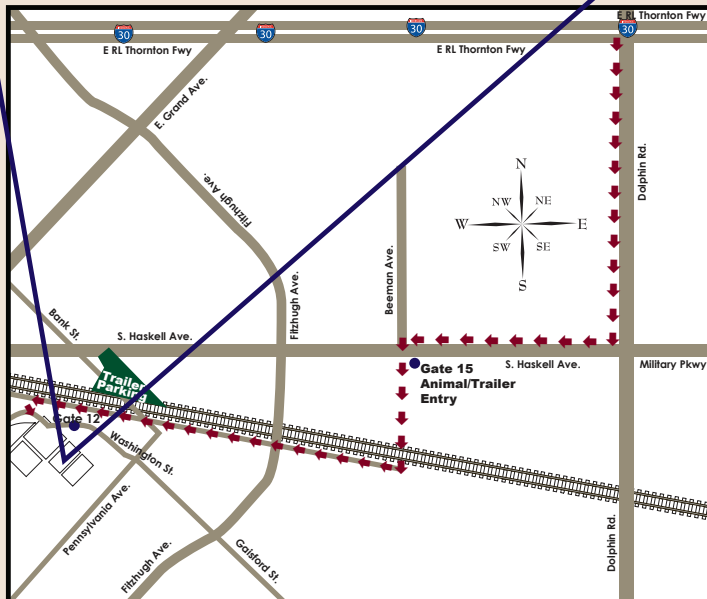
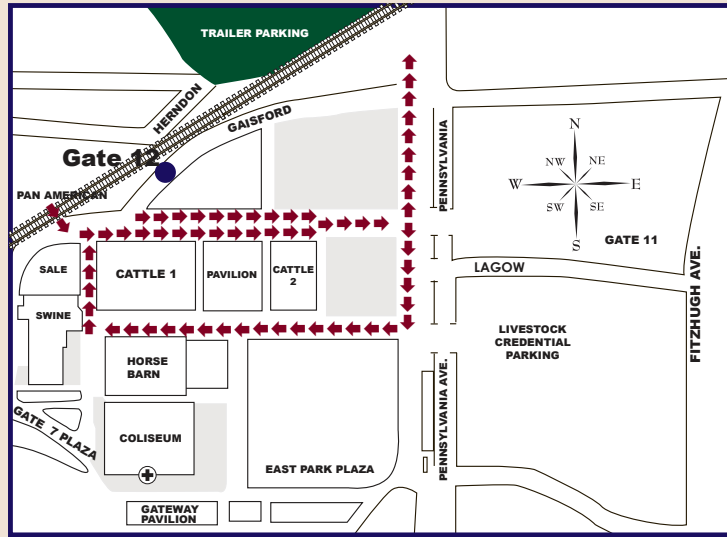
JUNE 1-30	Youth Goat, Lamb, Steer and Barrow Validation	AUGUST 25	Youth Entry Deadline	OCTOBER 3	Youth Livestock Auction
JUNE 30	Youth Ownership Deadline	SEPTEMBER 1	Open Entry Deadline	OCTOBER 7	Ag Mechanics and Tractor Restoration
JUNE 30	Youth Broiler Order Deadline	SEPTEMBER 15	Rabbit Show Entry Deadline	OCTOBER 12	Judging Contest
AUGUST 15	Youth Broiler Hatch Date	SEPTEMBER 27	Youth Leadership Day Public Speaking Contest Plant ID Contest		

Visit www.bigtexlivestock.com for 2008 Schedule of Events and Updates.

ANIMAL LOADING/UNLOADING SIMPLIFIED AT THE STATE FAIR OF TEXAS®

We have to work together to make the unloading and release processes move more smoothly, and in turn this will make for a better show experience for everyone attending this year's fair! We, at the State Fair, have put our heads together and have come up with some things we feel can be done to speed up both loading and unloading processes.

The new procedures will model after our market week process, so if you have entered through gate 15 in the past you are one step ahead! The new procedures will be in effect for ALL animal entry, for both Youth and Pan American Exhibitors.



- There will be a dedicated route through Gate 15 away from State Fair of Texas Public Parking.
- Take I-30 (just east of Downtown Dallas), Take exit 49B – Dolphin Rd, Go South on Dolphin at first light, Turn right on S Haskell at first light, Turn left into Gate 15
- Animal Health will now be located at the Gate 15 entrance
- Trailers will follow a specific route through the fairgrounds and enter at the Livestock Trailer Gate across from the Sale Pavilion
- From there you will be directed to the appropriate Livestock area for unloading
- A reminder if you take your trailer home and it is not kept in the State Fair Trailer Parking, you **MUST** re-enter through Gate 15

This process will only be for animal trailer entry. All Passenger/vehicles and credential parking will enter through Gate 12.

We are working with our great group of volunteers, the Youth Livestock Committee, to provide more manpower to help unload your tack. In the past they have helped unload market

animal exhibitors tack and will continue again this year. They will only be able to unload tack; therefore it is **your** responsibility to provide adequate help to move your animals ensuring a timely unloading process.

★ ★ BARN TALK ★ ★



Karla Sikes,
Director of Livestock

We had another great year at the State Fair of Texas in 2007. Your support has our shows growing by leaps and bounds. Thank you!

Because of the continued support and growth--change is in the air! At the 2008 State Fair of Texas, exhibitors and attendees will notice a definite difference during the upcoming fair. The State Fair Livestock Department strives to improve in all ways by making the show a success for all involved, and 2008 will not be an exception.

To highlight just a few of the changes we have listed them below:

LOADING AND UNLOADING PROCESS

As you read earlier we will have a new animal unloading process along with Animal Health moving to Gate 15. For detailed maps check out the website.

AGRICULTURAL MECHANICS AND TRACTOR RESTORATION

For students and teachers interested in agricultural mechanics, this first change should be an exciting one. This year's State Fair will continue its growth in the 3rd Agricultural Mechanics Project Show and a new Tractor Restoration Contest. The contests will take place on Tuesday, October 7.

LONGHORN SHOW EXPANDS

Pan-American Livestock Show
Longhorn cattle enthusiasts should note all entries must be registered with the International Texas Longhorn Association and/or the Texas Longhorn Breeders Association of America. This year's show features a non-haltered steer classes on Saturday October 18th.

2008 NATIONAL BRAHMAN SHOW

We are excited to once again host the ABBA National show during the Pan American Livestock Exposition, with females showing Wednesday, October 15 and males showing Thursday, October 16.

PAN AMERICAN GELBVIEH SHOW ANNOUNCED

Another Pan American Livestock show addition is the open Gelbvieh show. The show will be held Friday, October 10.

4-H/FFA PUBLIC SPEAKING CONTEST

The State Fair of Texas is proudly announcing Public Speaking Contest this year. The contest is open to all current 4-H and FFA members and will be held Saturday, September 27.

YOUTH HEIFER SHOW UPDATES

The youth beef heifer shows will have NO entry limitations. We are excited to announce the youth Gelbvieh Show has moved to Saturday, October 11. A new addition is the Star 5 heifer show on October 18. The Grand Champion heifers receives \$1000, with the Reserve Grand Champions receive \$500.

OTHER NEW SHOWS

- The Youth Rabbit Show is Saturday, October 4.
- The Junior Boer Goat Show is Friday, October 10.
- The Junior Llama Show is Saturday, September 27

SWINE SHOW CHANGES

While there have been several additions to this year's fair schedule, the Swine show will continue with a Junior Gilt Show, on Sunday September 28th.

NEW WEBSITE LAUNCHED

We are excited about the launch of our new website! The new site is very user-friendly and is the most current place to learn about what is going on at the shows. Many of the important links for exhibitors are being updated at this time. For more information hotels, driving directions and any of the shows and contests, please log onto www.bigtexlivestock.com.

Thank you again for supporting us, signing up for our newsletters, and filling out surveys that have been sent your way. We are listening! We want to make this a positive experience for all of you and are planning a bigger, better show!

We hope to see you in 2008.

SUCCESS BEGETS SUCCESS



IMPORTANT DATES TO REMEMBER



ANIMAL ENTRY SIMPLIFIED AT THE SFT



BARN TALK



YOUTH LEADERSHIP DAY

State Fair of Texas® Livestock
P.O. Box 150009
Dallas, TX 75315
Phone: 214-421-8723
Fax: 214-421-8792
www.bigtex.com

Youth Leadership Day

Mark Your Calendars

We are currently planning the 2008 Youth Leadership Day event, Saturday, September 27, 2008. As details are finalized they will be posted on our website, www.bigtexlivestock.com. So mark your fall calendars! We look forward to seeing you at the Fair! ★

Youth Leadership Day Saturday, September 27

- Order Tickets Online
- Food Drive begins at 8:00 AM prizes for clubs/chapters donating most food
- Seminar 10:00 AM - Pan Am Arena

State Fair of Texas® Livestock
P.O. Box 150009
Dallas, TX 75315

PRESORT STD
US Postage Pd.
Ft. Worth, TX
Permit #2266

The State Fair of Texas®

extends a heart-felt thanks to all our sponsors and partners. The dedication and generosity of these corporate partners make it possible for us to continue to serve the young people of Texas through educational programs and scholarships. Through these partnerships we are able to bring agriculture to life and showcase the best in the southwest.

